

191 2nd Street
San Francisco, CA 94105

Prime Office / Retail

+/- 3,125 RSF
FOR LEASE



MATTHEW WOLFF

BRE LIC# 01329156

415-343-2381

matt@beacon-cre.com

For Lease 191 2nd Street San Francisco, CA 94105

Contact Matt Wolff 415-343-2381

191 2nd Street Features

Amazing Location at the Corner of 2nd & Howard
Entrance on Both 2nd & Howard Streets
Superior Signage & Street Visibility
Nicely Improved
High Ceilings
Full HVAC
2 Blocks from Montgomery BART/Muni

Size

+/- 3,125 RSF

Type

Street Level Office/Retail

Term

Flexible

Rental Rate

Contact Agent

Date Available

Now

Multiple Enclosed Rooms



MATTHEW WOLFF

BRE LIC# 01329156

415-343-2381

matt@beacon-cre.com

High Ceilings, Open Space



MATTHEW WOLFF

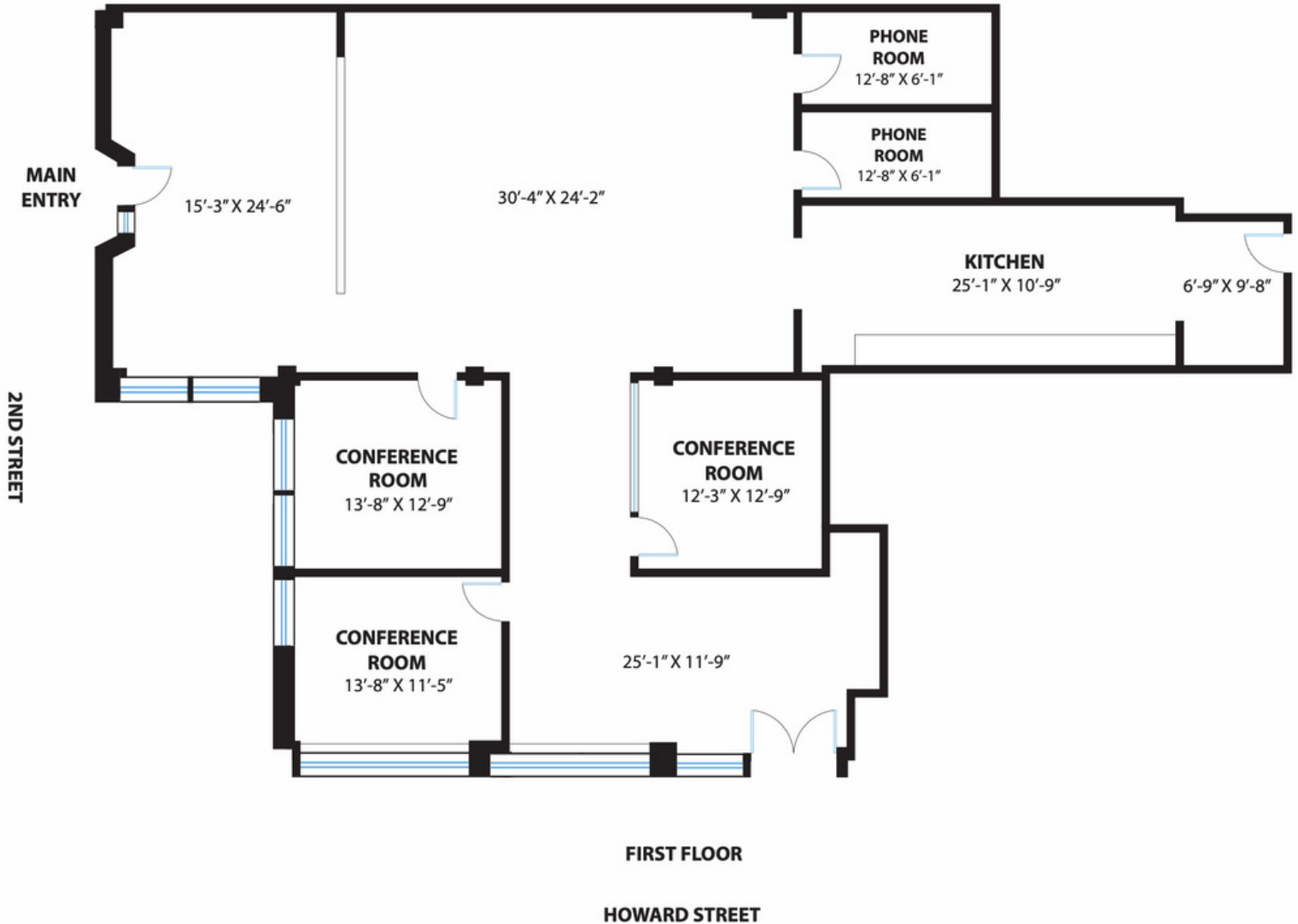
BRE LIC# 01329156

415-343-2381

matt@beacon-cre.com

Floor Plan

191 2nd Street



MATTHEW WOLFF

BRE LIC# 01329156

415-343-2381

matt@beacon-cre.com

Disclaimer: Rendering by Open Homes Photography. All measurements are approximate and may not be exact. Do not rely on the accuracy of this floor plan when determining the price of a property or making decisions regarding buying or selling of properties without independent verification.

Beacon Commercial Advisors and MattWolff have obtained the above information from sources believed to be reliable, but no representations of any kind expressed or implied are being made as to the accuracy of such information. All references to square footage, lot size, age of improvements, or income/expenses are approximations only. Buyer should conduct an independent investigation of all pertinent property information. Beacon Commercial Advisors and MattWolff bare no liability for any errors, inaccuracies or omissions.