



594 Howard Street, Suite 200

Creative Office

+/- 3,639 RSF
FOR LEASE

Ideal 2nd and Howard location 2 blocks from the Montgomery BART/Muni Station. The property has a secure fob key entry, bike storage. Space features brick and timber, exposed ceilings, tremendous natural light, operable windows, 6 office/conference rooms, large bull-pen area, kitchenette, full HVAC.



MATTHEW WOLFF

BRE LIC# 01329156

415-343-2381

matt@beacon-cre.com

Tremendous Natural Light, Open Space, Operable Windows, 6 Offices/Conference Rooms



Size
+/- 3,639 rsf
Type
Creative Office
Term
Flexible
Rental Rate
Contact Agent
Date Available
Now



Floor Plan

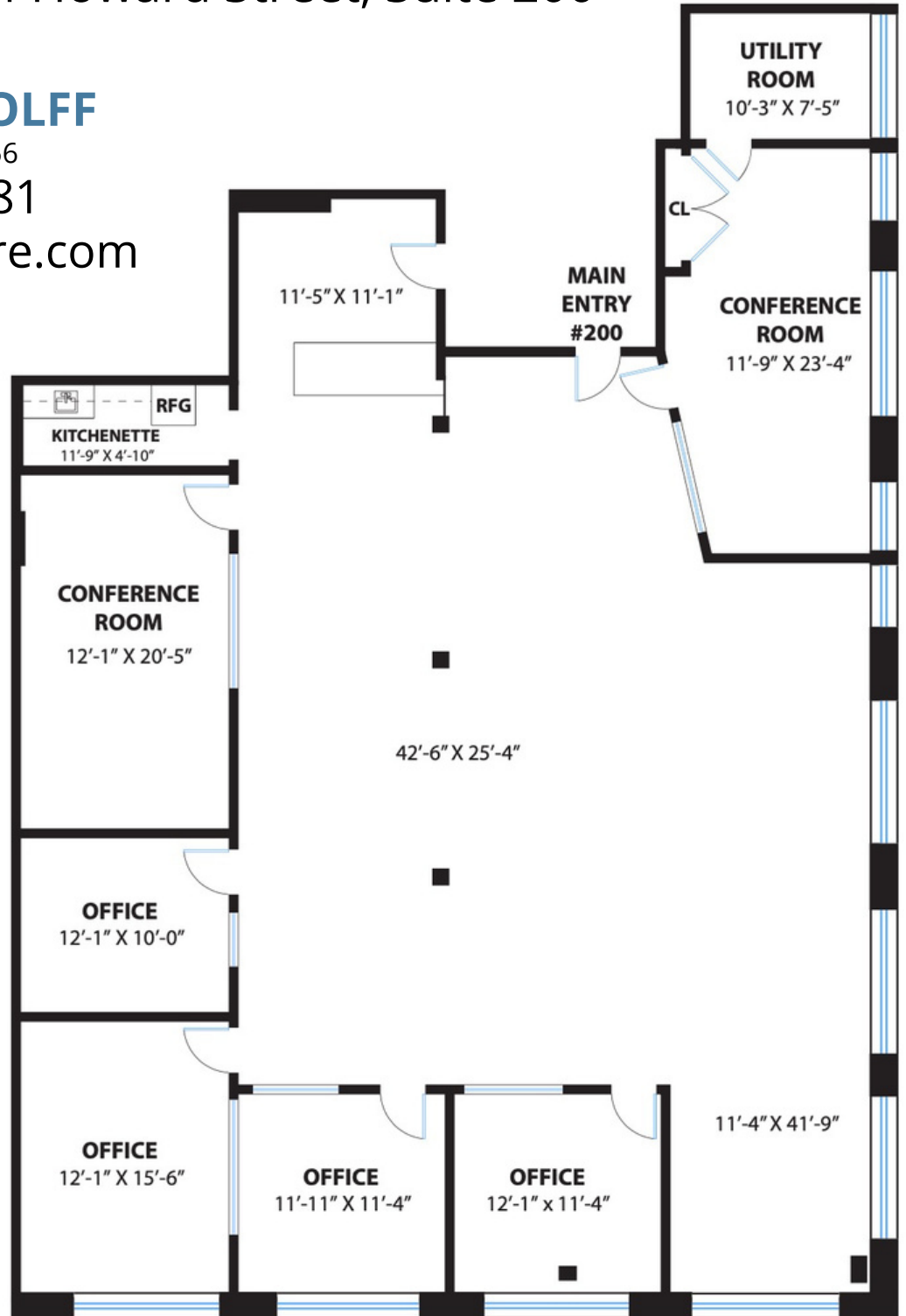
594 Howard Street, Suite 200

MATTHEW WOLFF

BRE LIC# 01329156

415-343-2381

matt@beacon-cre.com



SECOND FLOOR

Disclaimer: Rendering by Open Homes Photography. All measurements are approximate and may not be exact. Do not rely on the accuracy of this floor plan when determining the price of a property or making decisions regarding buying or selling of properties without independent verification.

Beacon Commercial Advisors and MattWolff have obtained the above information from sources believed to be reliable, but no representations of any kind expressed or implied are being made as to the accuracy of such information. All references to square footage, lot size, age of improvements, or income/expenses are approximations only. Buyer should conduct an independent investigation of all pertinent property information. Beacon Commercial Advisors and MattWolff bare no liability for any errors, inaccuracies or omissions.